

**STARMAN BROS. AUCTIONS INC.**

1240 Royal Drive ■ Papillion, NE 68046-2082  
(402) 592-1933

www.starmanauctions.com

Return Service Requested

PRSRRT FIRST CLASS  
U.S. POSTAGE  
**PAID**  
MAIL U.S.A.  
FIRST CLASS



**Saturday, June 4, 2005 starting at 9:00 A.M.**

**WWII AIRCRAFT & MISC. COLLECTABLES & MEMORABILIA**

PV-2 Items Include Rocket Mount Hard Points, Original Hatches, Original Loop Antennas, Original Cabin Rib Pads, 50 Caliber; Ammo Racks; Good Selection of Pictures C-130's & Older Airplanes; Collectables For Super Constellation, TWA, Delta, American, Continental Including Salt & Pepper Shakers, Cups & Saucers, Etc; Model Airplane Collection Includes PBX, Spitfire, TBM, AT-6 Etc; Hats From TWA, 737, Forest Division; Patches, Etc.

**SPRAY & WATER TANKS**



(2) Aluminum 1,200 Gal. Tanker Tanks For PV-2's  
300 Gal. Pickup Poly Water Tank  
4,000 Gal. Steel Water Tank

**OIL, GREASE & CHEMICALS**

(2) 55 Gal. Drums 60 Wt. Shell Non Detergent Oil; (2) 55 Gal. Drums of Gulf 50 Wt. Aircraft Oil; Gal. Cans of WD-40; 5606 Hyd. Fluid, Carquest Vehical; Wash, Degreaser & Tire Cleaner, Degreasers, Etc.

**AUCTIONEER'S NOTE:** The estate of Mr. Hirth has contracted with Starman Bros. Auctions Inc. to sell all of its assets. This auction gives the buyer a chance to purchase some nice war bird type aircraft as well as a good selection of R-2800 Engines & Inv. Also being offered is a good selection of vehicles, equipment & hand tools.

Everything sells "AS IS, WHERE IS" with no warranties implied or expressed. Neither the auctioneer nor owners shall be liable for any incorrect description, fault, or defect. Everything positively sells to the highest bidder. Payment must be made in full day of sale. No property removed until settled for. Auctioneer not responsible for accidents or stolen property. All counts are approximate.

**TERMS:** Cash, Certified Funds, or Company Check ONLY if accompanied by Bank Letter of Guarantee!! NO EXCEPTIONS! Wire Transfers will be accepted with a 20% non-refundable deposit day of sale. We also accept MasterCard and Visa. A 3% Buyers Premium will apply to this auction. If payment is Cash, Check, Certified Funds or Wire Transfer the 3% Buyers Premium will be waived.

**FLYING AIRCRAFT: TERMS:** Must Be Cash, or Certified Funds. A company check will be accepted ONLY with an IRREVOCABLE Letter of Credit From Your Bank. If a wire Transfer or bank Draft is used we need a 20% NON-REFUNDABLE DEPOSIT Day of Sale via one of the above mentioned forms.

**MANUALS**

(Approx. 200+) Manuals to Include Full Set of PV-2 Maintenance & Parts Manuals, R-2800-31 Maintenance & Parts, P&W R-985 & 1340 Maintenance Manuals, Boeing KC-97G Flight Service & Overhaul Manuals, Beech 18 Overhaul & Parts, Bendix & Misc. Other Accy. Manuals, Beechcraft Overhaul & Parts Manuals Include 19, 23, 24, 33, 36, 55, 58, 35, D, EG & H-18, Etc; Cessna Parts & Maintenance Includes C-172, Skyhawk XP, 182, Cardinal, 177RG, 206, 177, 150/152, C-310's, Etc; Cont. Parts & Overhaul Includes: IO & TSIO-360, IO-470, IO-520; Various Other Manuals & Large Selection of Aviation, Pilot & Spray Magazines

**GUNS**

Quality Arms US Carbine MI #1660481 w/Shoulder Strap; Marlin Mdl 444SS, Cal. 444, Micro Grove Barrel, Lever Action w/Weaver 1" Scope; Strum-Ruger .375 H&H Mag. w/Leapold 3 x 9 Scope, Lever Action; Winchester Mdl 94, 30-30 Lever Action; Springfield 16 Ga. Single Shot Shot Gun; H&R 22LR Mdl 999 Spotsman Revolver; Smith & Wesson Police Special 38 Cal. Revolver; Glock 9MM 9 x 19 Austria Built G64/BLT064 Automatic



**Hirth Air Tankers**

160 Airport Rd.

Buffalo, Wyoming

Located on the Johnson County Airport in Buffalo, Wyoming Ind KBTG

**ABSOLUTE AUCTION**

**Sale Site Phone:** Call Starman Bros. Auctions 402-592-1933 or 402-681-6456

**Airline Connections:** Commuter Airline Service into the following towns: Casper, WY, Sheridan, WY, Worland, WY, Gillette, WY or Cheyenne, WY 290 miles & Billings, Montana 170 miles. Private Aircraft can land at Johnson County Airport, Buffalo, WY. Identifier KBYG

**Hotels:**

Best Western Crossroads Inn  
75 N. Bypass Rd.  
Buffalo, WY  
307-687-2256

Super 8  
655 E Hart St.  
Buffalo, WY  
307-684-2531

Comfort Inn  
65 Hwy. 16 E  
Buffalo, WY  
307-684-9564

Mountain View Cabins & Camp Ground  
585 Fort St.  
Buffalo, WY  
307-684-2881

Econo Lodge  
333 E Hart St.  
Buffalo, WY  
307-684-2219

Big Horn Motel  
209 N Main  
Buffalo, WY  
307-684-7822

Mansion House Inn  
313 N Main  
Buffalo, WY  
307-684-2218

**STARMAN BROS. AUCTIONS INC.**

1240 Royal Drive ■ Papillion, NE 68046-2082  
(402) 592-1933

**STARMAN BROS. AIRLINE SERVICES, INC.**

9000 NW 15TH STREET ■ MIAMI, FL 33172  
(305) 477-6865

## LOCKHEED PV-2 HARPOON AIRCRAFT



Lockheed PV-2 Harpoon N-7080C, S/N 15-1465, Airframe: 1,750 Hrs. Total Time, Pratt & Whitney R-2800 Engine, Right Hand Engine: 1,300 Hrs. SMOH, Left Hand Engine: 900 Hrs. SMOH, Avionics: Dual Collins 350 Navs, Dual Collins 250 Comms., Dual Audio Amplifiers, Most All Instrumentation. Last Flew in 1998 on PA & WY State Fire Contracts, Equipped With Fire Retardant Discharging Tank. No Bombay Doors, Has Fairchild Andover 2 Cyl. Gas Aux. Power Unit.

Lockheed PV-2 Harpoon N-7670C, S/N 37472, No Log Books, Last Flown in 1986, Pratt & Whitney R-2800 Engines, Engines Last Run in 1995. Used As a Sprayer on Government Fire Ant Program. has 1,200 Gal. Alum. Spray Tank w/Spray Booms. has Bombay Doors Installed.

Lockheed V-2 Harpoon N-7272C, S/N 37276. No Log Books, Last Flew in 1986, Pratt & Whitney R-2800 Engines. Engines Last Run 1994. Used As a Sprayer on Government Fire Ant Program. Equipped w/1,200 Gal. Alum. Spray Tank & Spray Booms. Has Bombay Doors Installed.



Lockheed PV-2 Harpoon N-7458C, S/N 15-1200. This Aircraft Has Been Stripped. It Is Basically Fuselage on Gear w/Wings.  
Note: All of these aircraft were licensed under restricted category

## RAMP EQUIPMENT

Tow Motor 3,000 Lb. Forklift; Hobart 24 Volt Motor Generator, 1000-1500 Amp. w/Chrysler Industrial V-8 Engine; Generac 3500XL Portable Generator, 3500 Amp; Herman-Nelson Mdl. BT-400-1 Pre-Heater 400,000 BTU Gas Operated; Type A-1 APU Generator 24 Volt; Aircraft Engine Gantry (Disassembled); PV-2 Tow Bars; Koehring Portable Pre-Heater 90,000 BTU; Massey Ferguson Riding Lawn Mower w/32" Deck; Craftsman & Murry 20" Lawn Mowers; Homelite Mdl. S4 24" Snow Blower, 10 Hp; Ryobi 18" Weed Eater

**STARMAN BROS. AUCTIONS INC.**

1240 Royal Drive ■ Papillion, NE 68046-2082  
(402) 592-1933

**STARMAN BROS. AIRLINE SERVICES, INC.**

9000 NW 15TH STREET ■ MIAMI, FL 33172  
(305) 477-6865

## FUEL TRUCK & VEHICLES

1957 Dodge 100 AV Gas Truck, 6 Cyl. Flat Head, 4 Spd. Manual Tans. w/300 Gal. Steel Tank, Meter, Real, Filter



1986 GMC Vandara 3500 utility Van, 6.2 Liter Diesel, Auto, Trailer Tow Package, Electric Brakes; 1973 International 100 1/2 Ton Pickup, V-8, Auto. Trans., Trailer Tow Package, Dual Fuel Tanks, Very Clean, Little Rust; 1967 International Mdl. 1100B, 4 Wheel Drive, 1/2 Ton Pickup, 6 Cyl., 4 Speed manual Trans; 1970 Volkswagon Bug, Mfg. in Germany in 11/69. Been in Storage Since 1988, 83,000 Miles. Needs Some Interior work Otherwise Not in Bad Shape



20' Shop Built Tandem Axle Trailer

## EXHAUST

Large Selection of R-2800 (PV-2) Exhaust, Including Trumpits, Short Stacks, Long Stacks, Clamps, Risers, Etc.

## ELECTRICAL INVENTORY

Land Light Bulbs, Junction Boxes, Voltage Regulators, Carbon Pile Regulators, Rotating Beacons, Landing Light, Circuit Breakers & Switches, Etc.

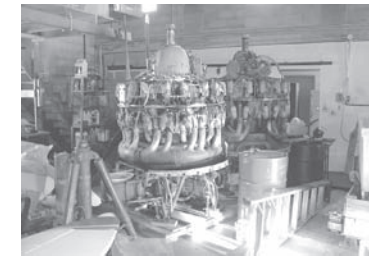
## SHOP EQUIPMENT

Roper Whitney Mdl. U422 Sheet Metal Finger Brake 4', 22 Ga; Sears Mdl. 102.17121 Air Compressor, 3 Hp. Single Phase, 2 Cyl., 2 Stage 1 1/2 Hp. Portable Air Compressor; Jet Bench Top Drill Press; Hicks CP-100 30 Ton H Frame Press; Lear Chemical ACF-50 Corrosion Application Spray Gun (New In Box); Duracraft Model 1200 Drill Press; Craftsman 10" Table Saw; Porter Cable Mdl. 7401 Polisher, 7" Variable Speed; Small Oxygen Acetlene Torch Set; (2) R-2800 Engine Build Up Stands; R-2800 Crankshaft Support Stand; (2) Craftsman Roll-A-Round Bottom Tool Boxes; Portable Sand Blasting Pot; Craftsman AC Arc Welder 3' x 3' Steel Welding Table; Craftsman Spark Plug Cleaning Unit; Craftsman 10 Drawer Top Box; Craftsman 6 Drawer Bottom Box; Snap On Bench Top Bead Blast Cabinet; Parts Cleaner; Aircraft Weighing Kit; Engine Maintenance Stand; 2', 6' & 8' Ladders, Some Aluminum; Schauer 6, 8, 12 & 24 Volt; Battery Charger; Dayton & Various Other Bench Grinders; 3 1/2" & 4" Bench vices; Large Anvil; Halogen Shop & Misc. Trouble Lights; Extension Cords & Air Hose; Masking Paper Dispenser; 2 Gal. Paint Pot w/Gun; Craftsman 6 Gal. Wet/Dry Vac; Barrel Pumps; Hyd. Jacks; Fire Extinguishers

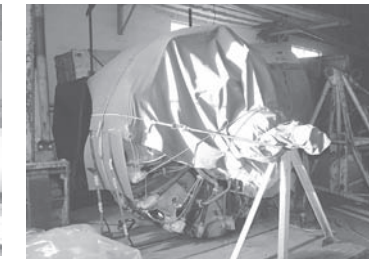
## HAND TOOLS

Several Sets of Snap On Sockets, Includes Regular & Deep Well 3/8" & 1/2" Drive; Snap On Crows Feet Wrenches; Mac Crows Feet Wrenches; Set Snap On Angle Wrenches; Snap On Combination Wrenches; Craftsman 3/8" Drive Universal Sockets; Craftsman Metric Wrenches; Blackhawk Combination Wrenches; Snap On & Craftsman Extensions; Snap On Breaker Bars; Parker Beading Tools Bendix High Tension Lead Tester; Snap On Gear Puller Set; Cont. & Lyc. Cyl. Base Wrenches; Century Tool Mdl. 2660, Individual Cyl. compression Test Set; Eastern Timing Ind; Eastern Magneto Synchronizer; Differential Compression Tester; Several Heli Coils; Central Tool Dial Caliper; Central Tool Dial Indicator; Central & Brown Sharp Micrometers 1 1/2 Thru 7"; Chicago Pneumatic Air Drills; 90° Air Drills; Rivet Guns Several Backing Bars; Several Rivet Sets; Several Clecos; Mac Pneumatic Rivet Puller; Seboth Fabric Tester; (2) Time Rite Indicators; Volt Ohm Meters; Torque Screw Drives; Dzus Fastner Tools; Drimmel Tool Set; Telescoping Gauges; Vacuum & Pressure Tester; Hole Saws; Blue Point Tap & Die Set; Micro Press Tool; Electric Drills; Pratt & Whitney Radial Engine Tools; Radial Engine Spanner Wrenches; Electric Drills & Circular Saws; Electric Grinders & Sanders; Champion Spark Plug Gappers; Snap Ring Pliers, Screw Drivers, Punch & Chisel Sets, Allen Wrenches, Mechanical Fingers, Files, Letter & Number Stamps, Ball Pene & Misc. Hammers, Air Guns, Pipe Cutters, Pinking Shears, Gasket Cutters, Makita Cordless Drills, Grease Guns, Com-A-Longs & Tie Down Straps, Jack Pads, Saws All, Channel Lock & Several Other Pliers, Crescent Wrenches, Hack Saws, Wood Chisels, Vice Grips, Safety Wire Pliers, C-Clamps, Tin Snips, Soldering Guns, Bolt Cutters, Heat Guns, Pop Rivet Pullers & Several Other Pieces

## PRATT & WHITNEY R-2800 B SERIES ENGINES



(5) P&W R-2800-B Series Engine Cores In Cans, No Logs; (1) R-2800-31 Engine Has 773 Hrs., S.O.H. w/Logs, 0 Hrs., Since Blower Repair & Test Run w/Run Up sheet

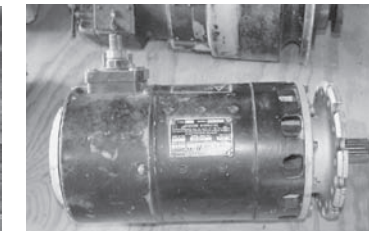


(2) P&W R-2800-B Series Engines w/QEC's, No Logs; (1) P&W R-2800-31 Engine Core on Stand, No Logs

## R-2800 CYLINDERS & ENGINE INVENTORY



(60+) R-2800-31 Cylinders To Include Fronts & Rears Overhauled & As Removed; Several R-2800 Nose Cases; Good Selection of R-2800 Internal Gears Including Ring Gears, Planetary Gears, Sun Gears, Etc; Oil Cooler Mounts, Oil Regulators, Carb Adapters & Screens, Oil Transfer Valves, Fuel & Oil Lines, Engine Baffling, Engine Accessories: Include Jack & Heintz Starters, Prop Governors, Oil Coolers, Pesco Fuel Pumps, Oil Pump Assys., Tach Generators



## PV-2 HARPOON INVENTORY

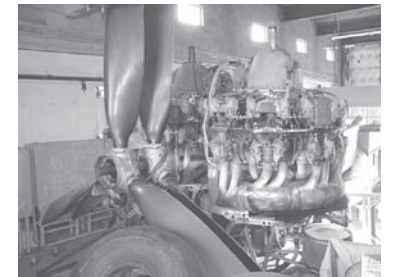
L&R Hand Wing Cores Damaged; Horizontal Stabilizer w/Elevator Damaged; Set of Inner Bombay Doors; (6) Rudders; (6) Rear Cowls; Nose Section & Nose Bowl; (4) Complete Cowl Flap Assy. Sets; Dish Pans w/Oil Cooler Scoops; Trim Tabs; Vertical Fins; Oil Cooler Scoops; Hyd. Tanks, Engine Mounts; (2) 15:00 x 16 Tubeless 10 Ply Recap Tires; (2) 15:00 x 16 Tire & Wheel Assys. As Removed; (1) 17:00 x 16 12 Ply Recap Tire; (2) 17:00 x 16 Tire & Wheel Assys; Several Complete Tail Wheel Assys. & Wheels; Several Used Multi Disc Brake Discs; Brake Assys., Tail Wheel Strut

## OFFICE EQUIPMENT

HP Pavilion Celeron Computer w/15" Monitor, Epson 480SXU Color Printer, Brother MFC-5100C Copier, 14" Color TV, Misc; Decks, Chairs & File Cabinets

## 8 X 10 PORTABLE BUILDING

## PROPELLERS & INVENTORY



(2) Hamilton Standard 43E50 3 Bladed Props; Prop Cones, Distributor Valves, Etc.

## HARDWARE

Nice Selection of AN & NAS Hardware to Include: Washers, Bolts, Screws, Lock Nuts, Machine Screws, Dzus Fastners, Etc.

## MISCELLANEOUS AIRCRAFT INV.

N3N Rudder, Wing Tip & Windshield, SNJ-T6 Canopy, Misc. Military Metal Seats, Jump Seats. Note: There are Approx. (16) 4' x 4' x 8' Crates Full Of Unknown Aircraft Parts Including: TBM Flooring, DC-3 Cowling, PV-2 and Other Older Aircraft Parts Including, Wing Nacell Fairings, Fuel Bladders, Control Surface Locks, Oil Separators, Hyd. Reservoirs, Accumulators, Battery Disconnect Plugs, Brackets, Fuel Check Valves, Engine Hardware, Rocker Covers, Oil Cooler Brackets, Flap Rails, Exhaust, Oil Coolers, Landing Gear Screws, Tail Wheel Tires, Shackle Mounts, Landing Lights, Engine Cowling, Engine Fire Shield, Etc. Etc. Etc.

## BENCHES, SHELVES & CABINETS

Metal 2 Door Cabinets; 3 Shelf Roll-A-Round Parts Rack; 10 Tier Lazy Suzanne Parts Rack; Misc. Shop Benches; 12" Metal Shelving; 2-Wheel Dolly